

Hoda Hatoum

Assistant Professor, Biomedical Engineering
Affiliated Assistant Professor, Mechanical
Engineering-Engineering Mechanics



jpbos@mtu.edu



+1-906-487-3161

Research Interests

- Cardiovascular Biomechanics
- Cardiocascular Biofluids
- Fluid Mechanics
- Medical Devices
- Patient-Specific Modeling



Links of Interest



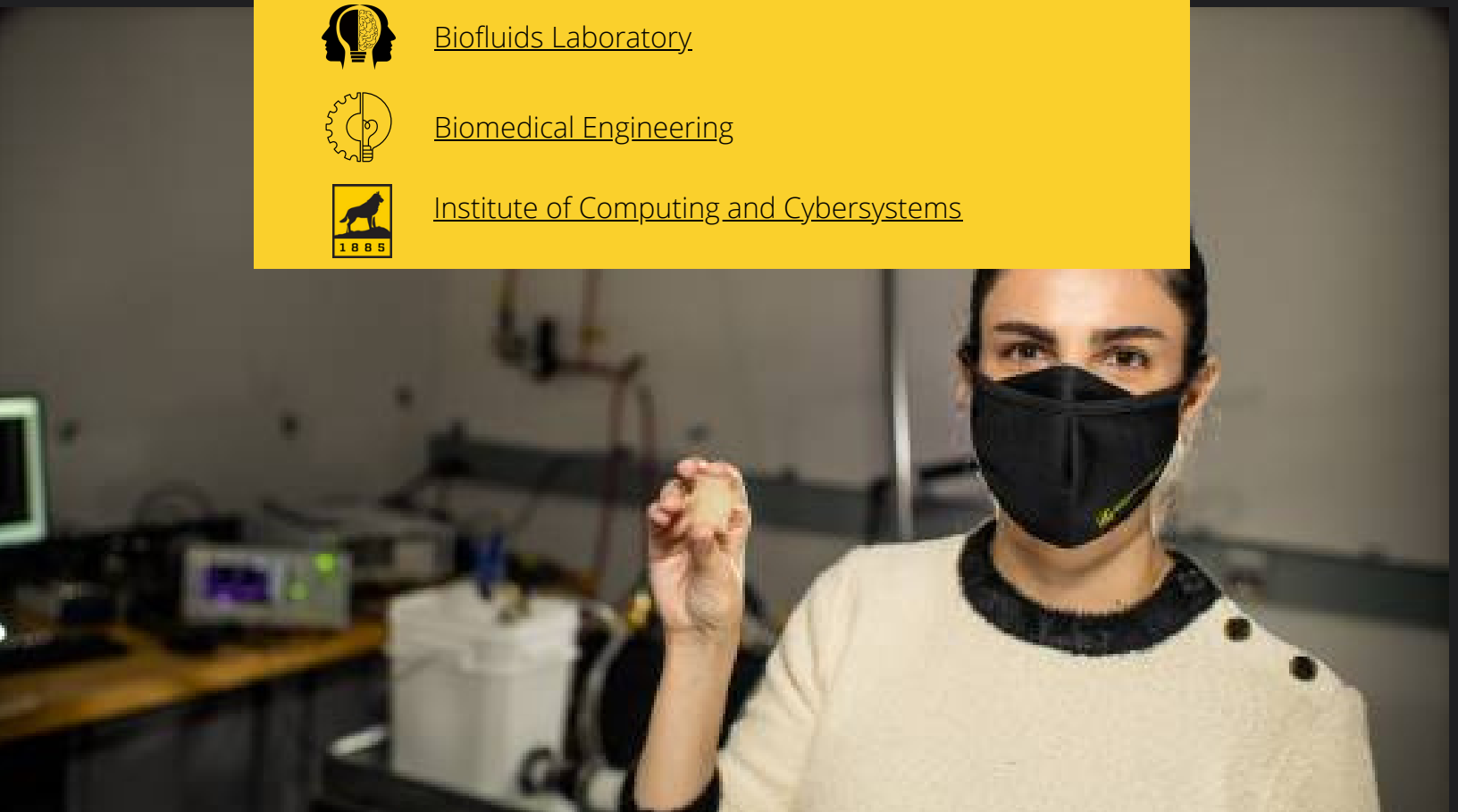
[Biofluids Laboratory](#)



[Biomedical Engineering](#)



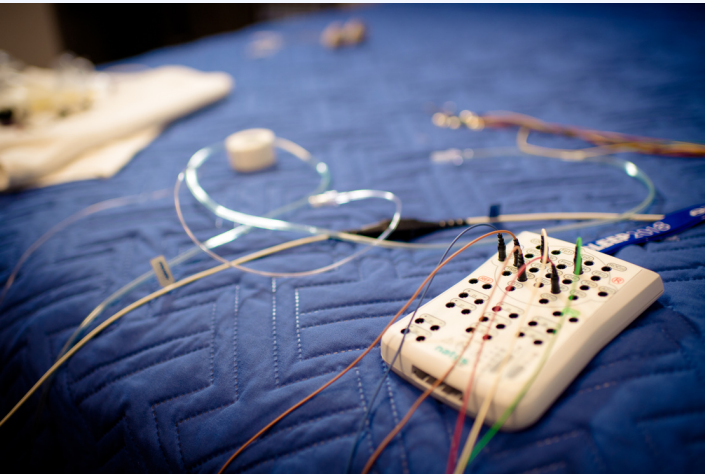
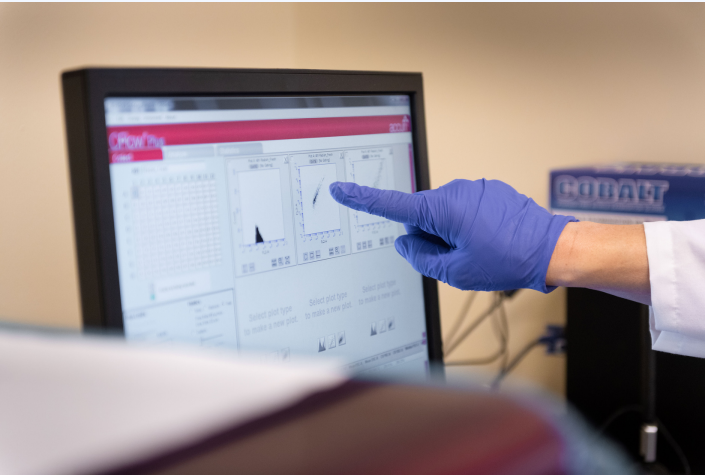
[Institute of Computing and Cybersystems](#)



Research Synopsis

Biofluid Laboratory

At the biofluids lab, Dr. Hatoum is interested in problems that are at the intersection of engineering and medicine. Through developing experimental setups, 3D printing, using experimental techniques such as particle image velocimetry (PIV) and computational simulations such as finite element analysis (FEA) and computational fluid dynamics (CFD), we assess the flow in patient-specific models to study cardiovascular diseases and treatments. Moreover, she can develop predictive models using large patient datasets to predict adverse outcomes after cardiovascular procedures.



[ICC] Institute of Computing
and Cybersystems

For more information



[Publications](#)

