



Michigan
Technological
University

YOUR JOURNEY STARTS HERE

You're Accepted
to Michigan
Tech!

Move-In
Day

Meet Your
Roommate

Get Your Class
Schedule

Pick Up Your
Books

Meet Your
Professors

Join a
Student Club



**Make Lifelong
Memories**



**Attend a
Hockey Game**

DEVELOP YOUR JOURNEY AND EXPLORE LIFE AS A HUSKY AT MICHIGAN TECH!

You chose Michigan Tech and we chose you right back.

At Michigan Tech, you will be encouraged to explore your own path. Your journey through your academic career and social community will be unique to you, but you will progress alongside other talented Huskies who are also making their way forward through their adventures. The path you choose may lead you across highs and lows, twists and turns, stops and starts, and intersections and diversions. As you move toward becoming a Michigan Tech Husky and develop your personalized experience, the Orientation Executive Staff student team is here to help and welcome you at every step. We are excited for you to come and shape the campus community, exploring your own journey along the way!

WEL COME

We can't wait until you're
on campus in August!



HERE'S WHAT YOU NEED TO DO BEFORE YOU GET HERE:

Submit AP Scores or Transcripts

All new first-year students and transfer students with fewer than 30 credits will be registered for classes by the Registrar's Office in early July. Transfer students with more than 30 credits will be assisted with class registration by their academic advisor. Please make sure to submit all AP Scores or official transcripts from other colleges as soon as possible to receive credit here! Questions? See mtu.edu/registrar/students/transfer or email transfer@mtu.edu.

TAKE YOUR ONLINE PLACEMENT TESTS

Math–ALEKS Placement Assessment

Your initial math placement depends on either your math scores for tests on record or your performance on the ALEKS placement test:

- If you have submitted ACT or SAT scores, scores from AP, IB, or CLEP, or have college credit for an equivalent math course, and you agree with the placement listed in your Husky Portal, you don't have to do anything further!
- If you do not have qualifying scores or transferable math credit, you must take the ALEKS placement test by June 30—find details in your Husky Portal.
- If you wish to challenge your initial placement, plan to take the ALEKS assessment by June 30.

For more details, visit mtu.edu/math/undergraduate/placement/taking-aleks



Modern Languages

If you plan to study French, German, or Spanish, take our free online Modern Language Placement Test. Placement tests are available throughout the summer and during Orientation Week. Students with AP language test scores of 3 or higher do not need to take the placement test. See mtu.edu/modern-languages

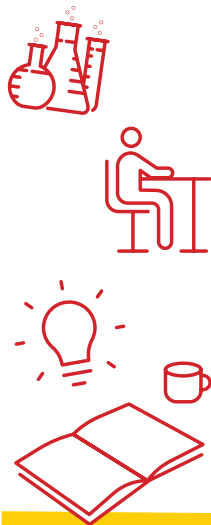
Computer Science Placement Assessment

All incoming computer science, computer engineering, software engineering, and data science students are required to take the CS Knowledge Assessment by the end of Orientation Week. It is important that you complete the assessment so you can be placed into the best-fitting course. Learn more at mtu.edu/cs/undergraduate/placement or contact Leo Ureel at ureel@mtu.edu with questions.



IMPORTANT DATES ABOUT HOUSING

Housing applications close **June 10**. Before then, new first-year students can begin the process of matching with a roommate! You will be able to create your own roommate profile, read other profiles, search, and match with prospective roommates through HuskyHouse. The deadline for transfer students to apply for on-campus housing is **June 1**.



Housing assignments will be available in HuskyHouse by **July 1** for those students who applied for housing between January 2 and June 10, and by **August 1** for those students who applied for housing after June 10.

Later in the summer, every student will be assigned a specific Move-In time on the Friday or Saturday before Orientation Week. To help manage traffic, please only check in during your assigned time. This information will also be available through the HuskyHouse portal, but check your email for updates and information.

Contact Your Roommate

On **July 1**, your room assignment, meal plan, mailing address, and roommate information will be available in your HuskyHouse portal. If you do not see this information by August 1, contact Residence Education and Housing Services.

Visit mtu.edu/housing for more information about living on campus, or contact Residence Education and Housing Services at housing@mtu.edu or 906-487-2682.

GET PREPARED FOR YOUR HUSKY EXPERIENCE

Keep track of everything you need to get done before you arrive on campus through your Husky Portal at mtu.edu/admissions/enroll. You can see any outstanding tasks, change your mailing address, or contact your regional admissions manager regarding any questions.

Submit Your HuskyCard ID Photo by August 1

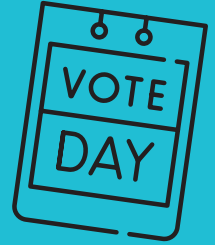
Your HuskyCard is your official photo ID, building access key, and residence

hall meal pass that you will need all around campus. Submitting a photo early for your HuskyCard will save you time during Orientation Check-In.

For instructions, visit mtu.edu/huskycard

Complete Assigned Safety Course

All new Michigan Tech students are required to complete an online course through Vector regarding sexual assault prevention and alcohol education for college. This course will provide simple strategies for keeping yourself and our campus community safe. Check your email in early August for an invitation from Vector to complete the course.



Prepare to Make Your Mark—**REGISTER TO VOTE!**

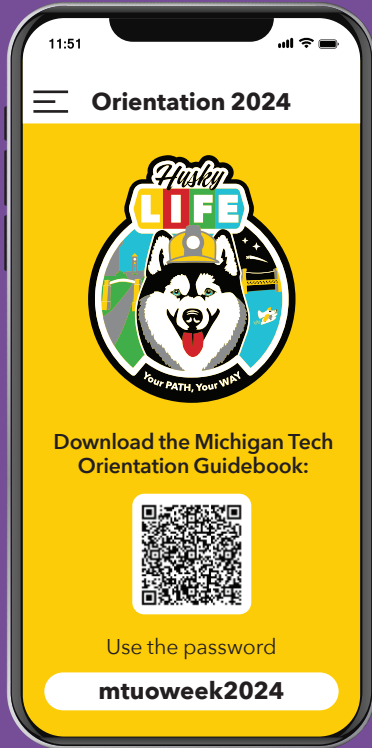
There will be opportunities on campus to register to vote, reminders about casting your ballot, and more. Get ahead of the game and register to vote now!

For year-round Michigan residents



For out-of-state students





Want to get a head start on preparing for Move-In Weekend and the Orientation experience?

Download the Orientation 2024 Guidebook mobile app, available on the Apple App Store and Google Play Store. Use code **mtuoweeek2024** to access the content. The app will be your one-stop resource for campus maps, Move-In information, weekly happenings, and any other need-to-know news for you and your Support Pack.

Keep a tab on our social media!

Throughout the summer, we will be updating our Instagram with Orientation Staff spotlights, helpful tips, and fun activities for you to enjoy when you arrive on campus.

 @wahteracenter

 @michigan_tech

IT'S TIME TO HEAD TO CAMPUS!

A Smooth Move-In Involves Two Key Steps:

Step 1: New Student Check-In

When you receive your Move-In time from housing, your first stop upon arrival will be the Van Pelt and Opie Library (building #17 at mtu.edu/maps). Please arrive at the library at your assigned Move-In time. Move-In times will either be on **Friday, August 16**, from noon to 6 p.m., or **Saturday, August 17**, from 9 a.m. to 3 p.m. You will be given your residence hall room key, parking pass, HuskyCard, Orientation materials, and Move-In map.

Step 2: Move-In

After you've checked in, follow the map to your residence hall and begin the Move-In process! The Michigan Tech Welcome Crew—a team of friendly Husky helpers—will be available to assist you. While there will be activities throughout the weekend, take time to explore the Keweenaw Peninsula or the surrounding area!



Navigate to
mtu.edu/maps
for a full
campus map.



UP NEXT

Where will **LIFE** lead you?



YOUR HUSKY SUPPORT PACK

A Support Pack includes anyone who will be supporting you on this journey, like parents, guardians, or close friends! In the weeks leading up to Check-In and Move-In, they will have access to valuable information related to the Husky experience and their role as your Support Pack on the Orientation 2024 Guidebook mobile app.

We will be offering opportunities for them to get their questions answered, explore campus, and learn more about Michigan Tech's services and resources. Support Pack Orientations will be offered during Move-In Weekend:

- **Friday, August 16**, from 6 to 7 p.m.
- **Sunday, August 18**, from 9 to 10 a.m.

More information will be provided throughout the summer at mtu.edu/success/orientation/parents-family

WHAT TO EXPECT FROM ORIENTATION WEEK 2024

Michigan Tech's First-Year Orientation provides an engaging and informative start to your college career. You will join a team of 20-30 students based on your major, and your team will go through Orientation Week together.

A current student and trained Orientation Team Leader (OTL) will lead each team through a series of meetings that will introduce you to important campus resources, familiarize you with your rights and responsibilities as a student, and help you connect with faculty, staff, and other students.

Students and their Support Packs have the opportunity to meet the Orientation Executive Staff student team, the Vice President for Student Affairs, the Dean of Students, and the University President at the University Welcome on **Saturday, August 17**, from 6 to 7 p.m. in the John MacInnes Student Ice Arena at the Student Development Complex (#24). This will kick off Orientation Week 2024!

Throughout the following week, students will explore the ins and outs of campus life. You will also have time to interact with other students of all majors outside of your Orientation team and residence hall throughout the week. Check your email for updates from your OTL, including introductions, team group chats, and other important information.

You will also have plenty of time to explore on your own during O-Week through our dozens of optional programs that cover a range of academic, involvement, and recreational opportunities.

Visit mtu.edu/orientation for more details on what to expect (and to meet our wonderful Orientation staff).

EXPLORE YOUR PATH AT MICHIGAN TECH!

Visit mtu.edu/success/orientation/undergraduate for more information and frequently asked questions about Move-In, Check-In, and Orientation Week.

EXPLORING THE OUTDOORS WITH OAP

Exploring the Outdoors with OAP is **August 22** and **August 24**. Orientation has partnered with MTU's Outdoor Adventure Program (OAP) to provide opportunities to explore the beautiful area around Tech. Registration will open after **July 20**. Keep an eye on the Orientation 2024 Guidebook app for more information. Trips include a sunset paddle on the Sturgeon River and hiking the Porcupine Mountains. Space is limited and pre-registration is required.

WEBINAR FOR STUDENTS

Join us on **July 18** from 5:30 to 7 p.m. Eastern for an online webinar about Orientation and what to expect. Find the link at mtu.edu/orientation. If you can't join us live, a recording will be available on the website after the event.



HEALTH AND WELLNESS SERVICES

Local Health Services

High-quality healthcare options are available in the surrounding area.

Visit mtu.edu/deanofstudents/students/services to review immunization recommendations, clinic and emergency room locations, and on- and off-campus health resources.

Student Disability Services

Did you have an IEP or a 504 plan in high school? Do you have questions about accommodations in college? Student Disability Services, or SDS, coordinates accommodations in classes (extended test time, less distracting testing, etc.) and housing (private restroom locations, adaptation of your meal plan, etc.). SDS's website also has forms for requesting an emotional support animal. There are also explanations of some of the changes you can expect from high school to college at mtu.edu/success/disability

Still have questions? Schedule a virtual or in-person appointment or contact SDS at sds@mtu.edu.

Center for Student Mental Health and Well-being

Whether you have received mental health services in the past or are seeking services for the first time,

we want to provide you with guidance on selecting the best option to meet your individual needs. We have created a Transition Guide to help you understand the services and options available to you at Michigan Tech. This guide outlines different options for mental health support, tips to prepare to transition to Michigan Tech, and frequently asked questions. Students also have access to a 24/7 telecounseling service called TELUS Health that can be accessed right from your phone!

To download the TELUS Health app to your phone, visit myssp.app/ca/home

For the Transition Guide and other resources on individual therapy, visit mtu.edu/well-being/student-services/individual-therapy

For more information and guides to obtain counseling, visit mtu.edu/well-being/for-students/services

DINING AT MICHIGAN TECH

All first-year students living on campus are required to have a meal plan, allowing them to swipe in for meals at one of the three dining halls around campus. More information about the specific meal plans available for first-year and new students can be found at mtu.edu/housing/dining. Please email huskyeats@mtu.edu for more information.

When you arrive on campus this August, some dining halls will be open on Friday and Saturday for all students and guests to enjoy free of charge as new Huskies settle in at Michigan Tech! Meal swipes for your meal plan begin **Sunday, August 18**. For up-to-date information on hours and open dining halls, check the Orientation 2024 Guidebook app.

Download the DineOnCampus mobile app for up-to-date dining hours and menus.





ORIENTATION EXECUTIVE STAFF

We can't wait until you're here!

The Orientation Executive Staff team is responsible for developing the Orientation program and ensuring that your introduction to Michigan Tech is as enjoyable as possible. Made up of current passionate students from a variety of majors around campus, the team works closely with the Orientation Team Leaders to provide all the information you need to know as a new Michigan Tech Husky. If you or your Support Pack has any questions, please contact us at orientation@mtu.edu or call 906-487-3558.

Cate Banzen
Programming Coordinator
Human Biology Major

I chose Michigan Tech because of the sense of **community**, and now, not only am I surrounded by talented and intelligent people who inspire me, but those same people are the ones I can go to whenever I need a shoulder to lean on.

Logan A. Galbraith
Logistics Coordinator
Mechatronics Major

Through the Enterprise Program, research opportunities, student organizations, leadership workshops, and many more, there are always options to diversify **scholarship**.

Jozie Opela
Training Coordinator
Biochemistry & Molecular Biology Major

All of the opportunities available to me at Michigan Tech have helped to shape me into who I am now. Whether that's through my research, my job, being president of a club sport, or as an athletic trainer student aide for the football team, Tech has given me the **possibilities** to be the best version of myself.

David Reeves
Communication Coordinator
Computer Science Major

Though my journey at Michigan Tech is still at the beginning of its unfolding, I have learned to respect the effort and honesty that must go into the work that Huskies create. Learning and accomplishment at

Michigan Tech is an effort that takes a village, requiring **accountability** for each individual to play their own part year-round.

Cole Pierucki
Lead Coordinator
Mathematics Major (Actuarial Science Concentration)

Originally after coming to Tech, I had expectations of seamlessly passing my classes and getting a degree in three years. However, my journey took me on a different path. In the face of adversity throughout my time at Michigan Tech, I chose to persevere through my studies, using **tenacity** to gain a deeper appreciation for the community here.



Cate Banzen



Logan A. Galbraith



Jozie Opela



David Reeves



Cole Pierucki

WELCOME, NEW HUSKIES!

The Waino Wahtera Center for Student Success works closely with the Dean of Students Office to provide you with the tools you need to succeed here at Michigan Tech. We welcome you to Tech, no matter which path you choose to explore during your time here.

Talented faculty and student staff assist others in their college journey through each stage of their Husky lives.

Our offices provide student success coaches, peer mentors, and peer teaching assistants who are here to help you traverse the transition between high school and college. We also have professional staff who are here to help you connect with various campus resources, answer questions, and be a foundation for support as you explore your path here at Michigan Tech.

As a member of our newest group of Michigan Tech Huskies, you and your Support Pack members have the chance to build and forge your own path to develop your own Husky Life. We can't wait to see you grow and succeed at Michigan Tech.



**Michigan
Technological**
University

Waino Wahtera Center for
Student Success
1400 Townsend Drive
Houghton, MI 49931-1295

Michigan Tech is an EOE that provides equal opportunity for all, including protected veterans and individuals with disabilities. 352680624